



# LS-300 Media Station

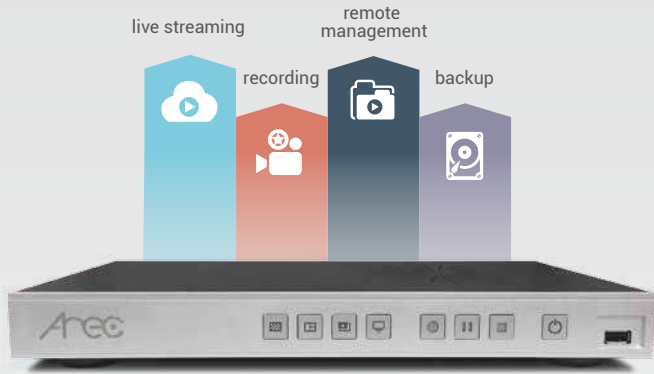


- All-in-One Device to Offer Up to 3 Full HD Video Sources Capturing, Mixing, Switching, Recording and Live Streaming
- Touch-Friendly Graphical User Interface Makes Live Production Accessible
- Easy to Create Your Live Video Like a Pro

# Main Features

## Easy to Create Your Live Video Like a Pro

Designer to lower the entry barriers of using professional AV equipment, AREC LS-300 is a lightweight and all-in-one Media Station, allowing users to simultaneously capture, switch, mix, stream and record live activities in a simple and efficient way.



## Broadcast Your Mixed Video

LS-300 can stream mixed video to up to 2 platforms simultaneously, such as YouTube, Facebook, Twitch and other live broadcasting websites.



## Touch-Friendly On-Screen Graphical User Interface

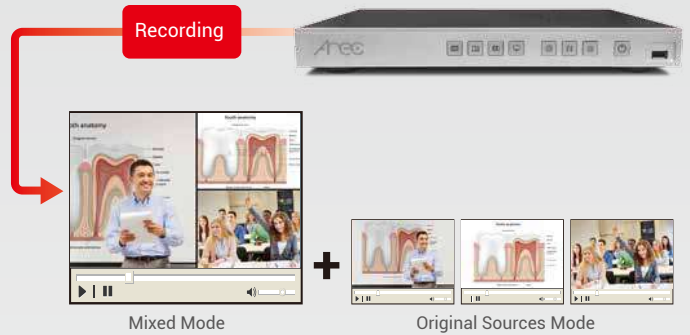
With a compatible touch display and built-in a touch-friendly graphical user interface (GUI)\*, LS-300 allows users to start or stop recording/streaming, change recording layouts, and playback videos with easier control. LS-300 also provides control buttons on the front of machine.

\* The on-screen GUI supports mouse device control through USB connection.



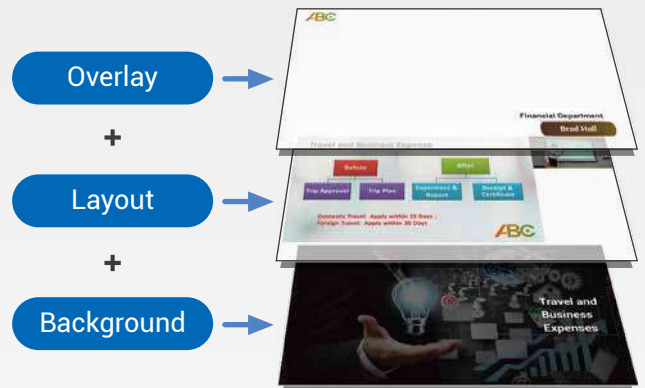
## Capture Up to 3 Video Sources at the Same Time

Via HDMI, VGA, RJ-45 interfaces or streaming inputs, AREC LS-300 supports up to 3 Full HD 1080p video inputs. Users can choose 1 mixed video plus 3 individual videos recording for flexible use. LS-300 can mix audio via HDMI, 3.5mm stereo audio jacks and AREC wireless microphone.



## Real-Time Assistant in Video Making

With AREC Online Director, LS-300 allows users to be in control of their video recording/streaming in real-time. It makes users easily switch and mix between sources, add or remove backgrounds and overlay graphics (titles) for live production.



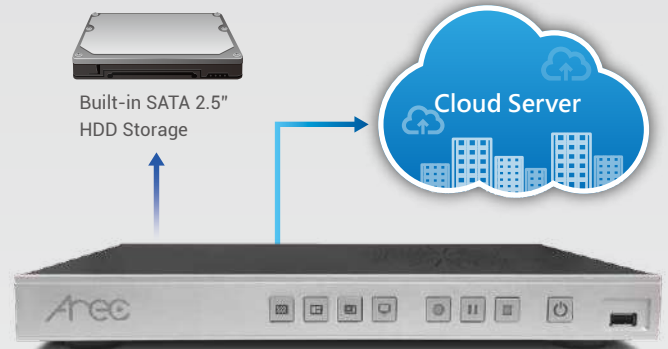
## AREC Video Manager : Videos With Just One Click

With the built-in Video Manager, administrators or teachers can manage videos saved in the local Media Station remotely. They can download, upload or delete a video file, and edit video information. With available APIs, all of the video content, metadata, and thumbnail can be delivered seamlessly for third party integration.



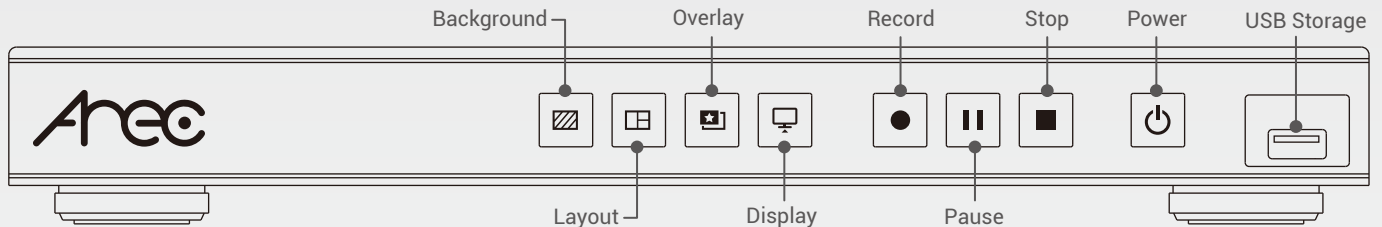
## Built-in Hard Drive Storage & Backup

Equipped with 1TB hard drive, LS-300 not only saves hundreds of hours recording videos but also enhances the overall efficiency. To satisfy different requirements, LS-300 also supports automatic and remote FTP backup to keep the recording safe.

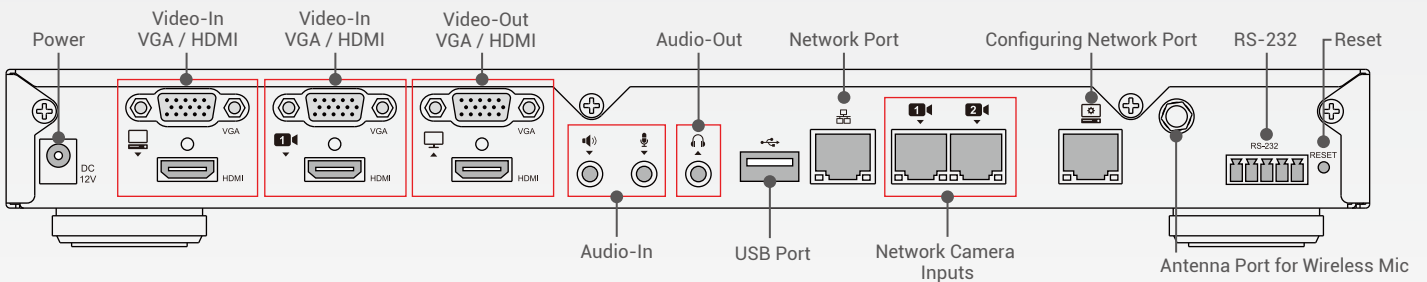


## Product Interface

### Front View



### Back View



## On-Screen Graphical User Interface



- 1 Overlay Images
- 2 Recording Layouts
- 3 Background
- 4 Custom Theme
- 5 Timer
- 6 Start / Stop Streaming
- 7 Start / Stop Recording
- 8 Snapshot
- 9 Playback Video
- 10 Setting
- 11 LS-300 IP Address
- 12 Audio Volumn Bar
- 13 Display Switch

# Specifications

Model Name	AREC LS-300 Media Station
<b>Input Connection</b>	
Video Input Interface	HDMI / VGA / RJ-45 (Supports AREC full HD network camera)  Note: Supports DVI and component video cable inputs with appropriate DVI to HDMI or component to VGA adaptors
Max. Video-In Channels	Maximum 3 channel synchronized recording HDMI / VGA: up to 2 channels Full HD network camera: up to 3 channels
Resolution Range	HDMI: 480i~1080p60 VGA video: 480i~1080p60 VGA PC: 640 x 480~1920 x 1080
Audio-In Channels	3.5mm Stereo Mic in: 1 channel; 3.5mm Stereo Line in: 1 channel; Wireless Mic: 1 channel; HDMI: 2 channels
<b>Video Processing</b>	
Compression	H.264 / AVC
Frame Rate	Max. 30fps
Bit Rate	300Kbps~4Mbps
Resolution	Max. 1080p (640x360 ~ 1920x1080)
<b>Audio Processing</b>	
Compression	AAC-LC
Bit Rate	80Kbps~320Kbps
<b>Video / Audio Outputs</b>	
Video Outputs	1x HDMI display port 1x VGA display port (1 output option from loop-through, inputs monitoring and multi-source display) 2x H.264/AVC digital video over Ethernet  Note: on-screen GUI is selectable between HDMI and VGA display port
Max. Output Resolution	1080p60
Audio Outputs	3.5mm Stereo Line out: 1 channel; HDMI: 1 channels
<b>Streaming</b>	
Streaming Delay	1 sec.
Compatible Streaming Input Protocols	RTSP, RTP, RTMP
Streaming Output Protocols	RTP, RTMP (RTMPS), RTSP  Note: 1. Users can choose 1 output option from RTP or RTMP only 2. RTP: MPEG2-TS over RTP unicast; MPEG2-TS over RTP multicast 3. RTSP (TCP/ UDP): Max 6 clients RTSP streams available via public URL (example: pulled streams)
<b>Storage, Backup, and Compatibility</b>	
Built-in Local Storage	1TB 2.5" SATA III Hard Drive
External Storage	Supports USB drive recording through the front port
Locally Stored File Format	MP4
FTP Backup	Automatic backup to an FTP or SFTP server after recording is done
Third-Party Software Server	Compatible with Opencast, Panopto, and Kaltura

<b>Recording</b>	
Recording Modes	Mixed mode, 1 Mixed + 3 individual original sources
Recording Layouts	Multiple layouts for pre-defined, including full screen / picture-in-picture / picture-by-picture / multi-channel split screen
Bookmark	Automatic and manual bookmark insertion
Background Images	Multiple for user-defined
On-Screen Images	Multiple for user-defined
Custom Themes	Multiple for user-defined, setting from web-based back stage
<b>Live Broadcasting</b>	
Live Broadcast to CDN or Stream Server	Yes, support RTMP protocol. Stream up to 2 platforms simultaneously
<b>Video Information Editing</b>	
Post Video Info Editing	Yes, through Video Manager web page
Video Info Adding	Video info will be added on video file name automatically while file output or uploading
<b>Controls of LS-300 and Network Camera</b>	
Touch Interface	Through recommended touch screen, interactive projector, or interactive module
Mouse Device	Through USB interface connection
Video Switcher	Yes, through AREC Online Director (web-based or desktop applications) or on-screen GUI for manual controls
External Control	Yes, supports RS-232 interface port
Control Buttons	Yes, at the front of the media station
Video Manager Platform	Built-in Video Management: through web-based control interface
Camera Control	VISCA / PELCO-D / PELCO-P / ONVIF profiles
<b>General Information</b>	
Operation System	Embedded Linux system
Power Supply	12V / 2A
Temperature / Humidity	0~40°C / 90%
Dimension	354mm(L) x 185mm(W) x 46mm(H)
Weight	1.71kg (3.76 lbs)
Language	SC / TC / English/ Russian/ Spanish/ Czech/ Korean
Accessories	Power adapter / quick guide / wireless Mic antenna
<b>Recommended AREC Products</b>	
AREC Auto-Tracking System AREC Network Camera CI Series AREC Wireless Microphone	



AREC Inc. | [www.arec.com](http://www.arec.com) | [sales@arec.com](mailto:sales@arec.com)  
 Headquarters: Taipei, Taiwan  
 Address: 3F, No. 367, Sec.2, Wenhua RD., Banqiao Dist.,  
 New Taipei City 220, Taiwan (R.O.C)  
 TEL: +886-2-8259-5060

AREC reserves the right to modify product specifications without prior notice.